

# Mining and Bulk Material Handling Division

High productivity solutions - tried,  
tested and proven



thyssenkrupp



---

# We are thyssenkrupp

## Our Group

## Mission Statement

### **We are thyssenkrupp.**

Competence and diversity, global reach, and tradition form the basis of our worldwide market leadership. We create value for customers, employees and shareholders.

### **We meet the challenges of tomorrow with our customers.**

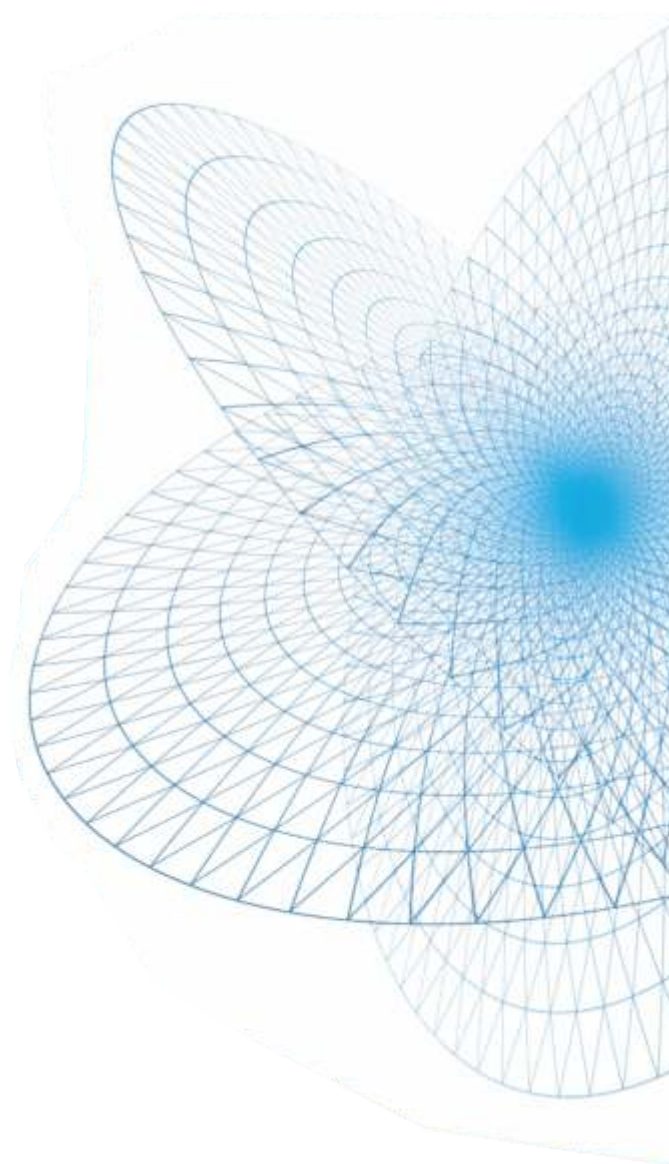
We are customer-focused. We develop innovative products and services that create sustainable infrastructures and promote efficient use of resources.

### **We hold ourselves to the highest standards.**

We engage as entrepreneurs, with confidence, a passion to perform, and courage, aiming to be best in class. This is based on the dedication and performance of every team member. Employee development is especially important. Employee health and workplace safety have top priority.

### **We share common values.**

We serve the interests of the Group. Our interactions are based on transparency and mutual respect. Integrity, credibility, reliability and consistency define everything we do. Compliance is a must. We are a responsible corporate citizen.



---

# thyssenkrupp Industries India

## Technology for the core sectors



Pimpri, Pune



Pune Works



Hyderabad Works



Leveraging more than 7 decades of integrated engineering excellence, and an impeccable track record of technology leadership, thyssenkrupp Industries India (tkII) provides turnkey solutions to customers not only in the critical area of Mining & Bulk Material Handling, but also in Sugar Plant & Machinery, Cement Plant & Machinery and Industrial Boilers & Power Plants.

thyssenkrupp Industries India has been contributing to India's core sectors of mining, power and ports for more than 75 years.

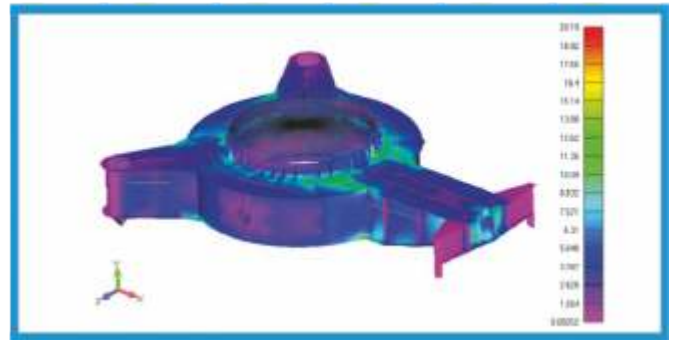
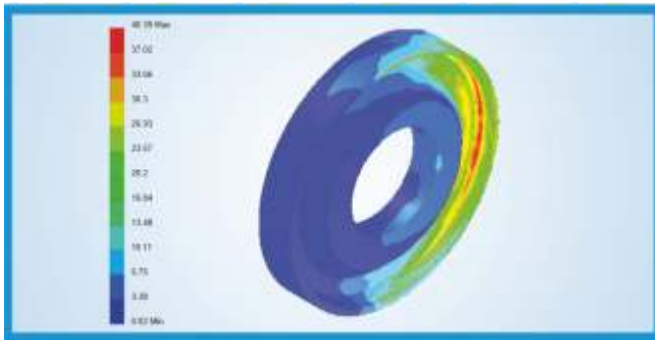
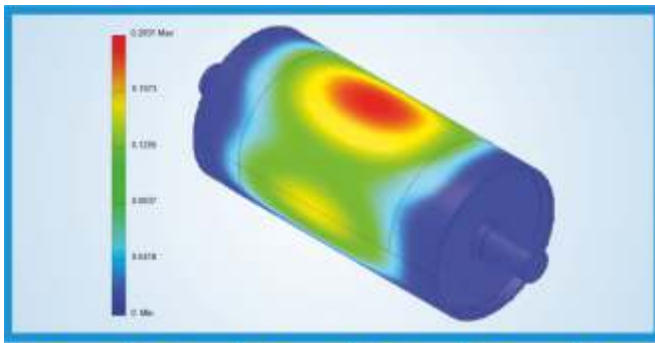
Today a leading name in bulk material handling and mining equipment and systems, many success stories of thyssenkrupp Industries India in this area can be attributed to the company's technical expertise and manufacturing capabilities in this field.

The last seven decades have seen thyssenkrupp Industries India successfully execute many complex

projects in India and abroad, working independently as well as jointly with thyssenkrupp Industrial Solutions, Germany. Behind these successes has been a range of 360 degree services that encompass everything from design, engineering, manufacturing, supplying, erection and commissioning of turnkey projects for various industries.

What customers get is the assurance of technology driven turnkey solutions, integrated with their processes, backed by industry-wide experience and driven by total commitment to customer satisfaction. The rationale has been simple and all-encompassing: deliver reliable solutions that are present perfect and future ready.





# Turnkey Capabilities

## Complete in-house expertise



Manufacturing unit at Pune

Powered by tried, tested and proven technology, many times over, thyssenkrupp Industries India executes high value mega projects on turnkey basis - covering the entire spectrum from concept to commissioning.

This, along with its extensive state-of-the-art design and manufacturing facilities and an enviable reputation for timely and quality execution of projects have together, led to thyssenkrupp Industries India being a trusted and preferred turnkey contractor.



Manufacturing unit at Hyderabad

### Design and Engineering Expertise

Over the decades, the company has acquired extensive experience in providing optimum and comprehensive technical solutions in complex applications. Solutions that are tailor-made to customers requirements in the Mechanical, Structural, Electrical, Control & Instrumentation and Civil fields.

The fact that thyssenkrupp Industries India has successfully worked with many leading consultants on various projects, gives the company the necessary experience and expertise to design plants conforming to the most stringent international standards.

### Manufacturing

thyssenkrupp Industries India has state-of-the-art manufacturing facilities in Pune and Hyderabad. These units are equipped with excellent fabrication facilities and modern machine shops deploying cutting-edge CNC technology, and are aided by testing equipment of global standards.

It is with in-house design, engineering and continuous liaison throughout the manufacturing cycle, that facilitates flawless results and deliveries every time.

---

# Project Management, Quality Assurance, Erection and Commissioning End-to-end solutions



## Material Management

thyssenkrupp Industries India has an experienced team of procurement/ sourcing personnel. This, combined with ready access to thyssenkrupp counterparts around the world, gives thyssenkrupp Industries India a clear edge when it comes to sourcing the best in raw material, components and bought-outs in India, or anywhere else around the globe.

Periodic vendor-rating is undertaken to ensure consistent quality of input materials, thyssenkrupp Industries India quality control personnel are deputed to vendors' sites, to ensure adherence to even the most exacting customer requirements.

## Project Management

thyssenkrupp Industries India project managers function as focal points through whom all critical activities are integrated. Customers are always assured of a single point solution for all their queries. These project managers undertake from planning and communicating with clients, to ensuring strict compliance with contractual requirements. Our highly trained professionals are geared for prompt response for execution issues that may occur in ever-changing operational environments. What is assured, is complete peace of mind for the customer.



### Quality Assurance

Quality Assurance starts right from planning and designing of the product and ends only with trouble-free plant performance. All processes are well-defined and fully integrated into an ERP system that ensures start-to-finish product quality and continual improvement. Every department is committed to absolute adherence to predetermined quality standards and enabling flawless performance of the final product. A full-fledged quality division is responsible for quality planning, inspection and testing activities that stretch right from the raw material stage, and extend right through manufacturing up to erection and commissioning. thyssenkrupp Industries India is an ISO 9001:2015 company with product certifications from ASME ("U", "S" & "PP" stamp Certificate of Authorisation). tkil is also certified for ISO 14001:2015 Environmental Management System and ISO 45001:2018 Occupational Health and Safety Management System.

### Erection and Commissioning

thyssenkrupp Industries India capabilities in setting up highly sophisticated plants of large capacities are based on comprehensive in-house resources and a deep pool of ready expertise. A well maintained, ready fleet of cranes and transport trailers ensures smooth handling of material and equipment during erection of plants. Backing this up are fully trained and experienced service specialists who provide a complete range of after sales services, breakdown assistance, preventive maintenance, training services to clients' operators and spare parts management to assist customers in scientific inventory planning. thyssenkrupp Industries India repair and service teams undertake annual maintenance of plants and machinery as well as reconstruction of plants.

---

# Product Range Spectrum at a glance

## Solutions for every requirement



Paddle Feeder



Vibrating Screen



Ring Granulator Crusher



Wagon Tippler



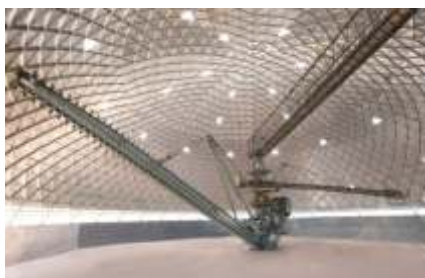
Combined Stacker-Reclaimer



Portal Scraper Reclaimer



Overland Conveyor



Circular Stacker Reclaimer



Pipe Conveyer





---

# Equipment and Systems for Material Handling Plant Leveraging cutting edge technology



The Mining and Bulk Material Handling Division of tkll started its journey in 1976, and since then we haven't looked back. Over time we have moulded and shaped the Mining, Bulk Material Handling and Comminution (Crushing & Grinding) sectors of the country with cutting edge technology and time-tested, sustainable solutions that have delivered nothing but excellence.

Powered by world class technology, tried, tested and proven many times over, we have executed countless projects on EP/EPC basis covering the entire spectrum from concept to commissioning in the core sectors of Open Cast Mining, Power, Ports, Steel, Fertilizers and Minerals and have established ourselves as the Go-To partner for our customers.

Our resolute pursuit of customer satisfaction and commitment towards bringing value for our customers means our customers are at the centre of everything that we do. Our network of branch offices ensures that we cater to our customer needs on time, every time.

**We are the Mining and Bulk Material Handling Division .....**

**Driven by technology.....Powered by experience..... Building the Core sectors**

---

# Stackers and Reclaimers

## Economical, efficient and operator-friendly



### Stackers

In any large scale stockyard operation, one of the major functions is stacking the material. thyssenkrupp manufactures Rail Mounted Stackers in a variety of configurations. These rugged, operator friendly stackers are designed after carefully taking into consideration functional requirements like throughput, mobility and automation (semi or fully automatic) as well as operational requirements like luffing and slewing.



### Bucket Wheel Reclaimers

thyssenkrupp manufactures the whole range of stacking and reclaiming machines for stockyards. The Rail Mounted Bucket Wheel Reclaimers, for various types of material, have built-in safety elements and hydraulic systems to ensure smooth operations.

Available with either fully or semi-automatic control systems, these machines guarantee not only uniform reclaiming of stockpile but also the highest degree of economy and efficiency.

---

# Combined Stacker-Reclaimers

## Specially designed for every application



### Combined Stacker-Reclaimers

Combined Stacker-Reclaimers are single unit machines which can operate in both stacking and reclaiming modes separately. Not only are these systems economical alternatives to those which involve separate reclaimer and stacker, but they also permit a high degree of automation in both modes of operation.

thyssenkrupp also manufactures Reversible Stacker-Reclaimers for use in cases where the layout does not permit unidirectional flow of stockyard conveyors. These machines can be offered with the conventional cross conveyor system or with retractable tripper.

Combined Stacker-Reclaimer can be used for blending/ mixing different types of coal for power plant applications.



---

# Other Stockyard Equipment Options for more productivity



## Other Stockyard Machines

thyssenkrupp designs, manufactures and supplies stockyard machines like Bridge-Type Scraper Reclaimers, Portal and Semi-Portal Scraper Reclaimers, Circular Stacker Reclaimers and Side Scraper Reclaimers, for cases requiring pre-blending of raw material e.g. blending of limestone and coal for cement plants, steel plants etc.

Blending is achieved by forming stockpiles using the Chevron, Chevcon or Windrow methods, and then extracting the raw material across the stockpile using triangular rake and scraper blades.



---

# Feeders

## Rugged and reliable

### Apron Feeders

thyssenkrupp offers Apron Feeders, in different sizes and capacities; for a wide range of applications, with electro-mechanical or hydraulic drives to suit customer requirements.

thyssenkrupp Apron Feeder applications vary from in-plant to mine installations. Apron Feeders are suitable for stationary, semi-mobile or mobile crushing installations. thyssenkrupp offers Apron Feeders with 'in board' as well as 'out board' chain designs. Use of special material makes these Apron Feeders more reliable, maintenance friendly and more silent with lower-power consumption.



### Paddle Feeders

thyssenkrupp has developed Paddle Feeder machines with a large range of capacities, which come with both electrical as well as hydraulic drives.

thyssenkrupp Paddle Feeders ensure high reliability, compactness in design, low power consumption, operational simplicity and ease in capacity variation thus making them ideally suitable for operation in mines and thermal power stations.



# Screens

## High efficiency on demand



### Screens

A range of high efficiency Screens can be offered wherever screening is required before or after crushing. Special purpose Screens like Eccentric Disc Screens are also available for handling sticky materials.

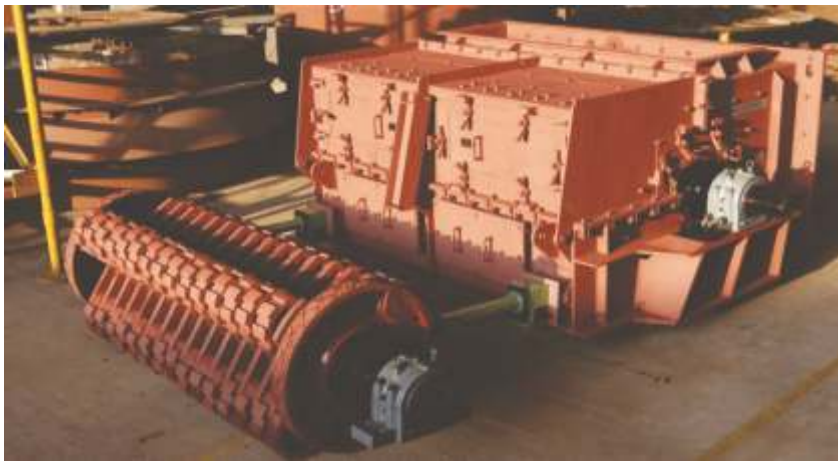
### Product Range

- Vibrating Screens (Circular and Linear)
- Roller Screens
- Grizzly Screens
- Wobbler Feeders



# Crushers

## Strong and powerful



### Crushers

thyssenkrupp offers a wide range of Crushers that are designed to take on any crushing job. Different types of crushers are used for crushing different types of materials - ranging from soft coal to very hard iron ore. Each type of crusher comes in various sizes, with selection dependent on the requirement of particular capacity, feed and crushed product size. They can be offered for stationary and mobile applications.

### Product Range

- Double Roll Crushers
- Ring Hammer Mill/ Ring Granulator
- Rotary Breakers
- Jaw Crushers
- Hammer Mills
- Cone Crushers



---

# Wagon Tippers

## High productivity at every turn



### Wagon Tippers

thyssenkrupp manufactures a wide range of Tippers, including Side Discharge Tippers and Rotary Tippers for railway wagons. These tippers can handle wagons of various widths, heights and lengths as per revised RDSO G33 (Rev-1) guidelines.

thyssenkrupp Side Discharge Tippers, available with both mechanical and hydraulic tipping drives, are capable for 25 tips per hour or more according to new RDSO design guidelines

thyssenkrupp Single and Twin 'C' type rotary tippers unload the wagons by turning them through 180 degrees. A hydraulic holding system secures the wagons from side and top during tipping process.

### Advantages of Twin Wagon Tippler

- Wagon unloading capacities are doubled
- For a 25 Tips/ hr wagon tippler, 50 wagons will be unloaded in 1 hour, leading to a faster turn-around of Rakes



### Transfer platform along with puller/ pusher/ side arm charger

thyssenkrupp Transfer Platforms, installed at the out-haul side of the wagons tippler complex, are ideal for compact railway yard layout and plants short of land.

These Transfer Platforms, along with puller/ pusher, help transfer empty wagons on a track parallel to the in-haul track, thus facilitating a rake of empty wagons to be formed which, in turn, saves a stretch of land equivalent to 700 M length of rail track. A perfect solutions for railway yard layout constraints/ scarcity of land by saving huge cost in development of railway yards.

Also available is a hydraulically or electro-mechanically operated side arm charger with positive rack and pinion mechanism. This proven design ensures accurate positioning of wagon on the tippler platform. thyssenkrupp's side arm chargers can handle fully loaded rake of 60 wagons.



---

# Conveyor Systems and Overland/ Long-Distance Curved Conveyors

Adding economy to operations



### Conveyor Systems

thyssenkrupp Industries India has a large presence in the field of Cross Country Conveyors and Pipe Conveyors. thyssenkrupp Industries India manufactures critical components like idlers and pulleys in its manufacturing facilities complying with international codes and standards.

### Overland/Long Distance Curved Conveyors

thyssenkrupp Industries India also manufactures and executes long distance cross-country curved conveyors.



### Idler Rollers

thyssenkrupp precision idler rollers are the product of choice for high-speed and pipe conveyors in light, medium and heavy applications with low T.I.R. and low break-away resistance. Their excellent technical characteristics enable a more economical design for our customers, especially for troughed conveyor belts.

Every single idler roller undergoes a freewheel test before delivery and use to ensure optimum quality and performance. Our comprehensive consulting service is the foundation for customized designs, which we develop and manufacture according to customer requirements. Seamless tubes can be offered as an option.



### Pulleys

thyssenkrupp's experienced design capabilities and the deployment of the best fabrication techniques and top-quality materials make thyssenkrupp conveyor pulleys operationally reliable. The key design features are keyless connection between hub and end disc, post-weld heat treatment of pulley body, balance – ISO 1940 grade G40, exposed areas painted for rust protection, locking assemblies with dust covers, improved flexibility through using profiled end disc, stress analysis of pulleys using FEM software to ensure reliability in design

# Pipe Conveyors

## Environment-friendly operations



### Pipe Conveyors

thyssenkrupp Pipe Conveyors are manufactured from high-grade materials and proven components to give maximum reliability. The advantages are numerous:

- Ability to negotiate 3-D curves, resulting in minimum requirement of transfer points
- Material being transported is protected from wind, rain and other environmental hazards
- Dust and air-borne emission is avoided
- Pipe Conveyors require minimum space, have stable running characteristics in all operating modes, and can be routed through narrow curves or up sharp inclines

thyssenkrupp Industries India Pvt. Ltd.

### **Pune**

Pimpri, Pune - 411 018, Maharashtra, India  
P: +91 20 2742 5461-64  
F: +91 20 2742 5350  
Email: [contactus.tkii@thyssenkrupp.com](mailto:contactus.tkii@thyssenkrupp.com)

### **Hyderabad**

Survey Nos: 212-215, IDA, Phase - II,  
Cherlapally, Hyderabad - 500 051. Telangana,  
India  
P: +91 40 2726 3647 / 3540 / 2762 / 3015  
F: +91 40 2726 3162  
Email: [tkii.hydbad@thyssenkrupp.com](mailto:tkii.hydbad@thyssenkrupp.com)

### **Registered Office**

#### **Mumbai**

154 C, Mittal Tower, 15th Floor,  
210, Nariman Point  
Mumbai - 400 021, India  
P: +91 22 2202 0064 / 6837  
F: +91 22 2204 4025  
Email: [tkii.mumbai@thyssenkrupp.com](mailto:tkii.mumbai@thyssenkrupp.com)

### **Branches**

#### **Chennai**

Temple Tower, 5th Floor, Nandanam  
672, Anna Salai, Chennai - 600 035, India  
P: +91 44 2431 4235 / 2433 9482  
F: +91 44 2434 8198  
Email: [tkii.chennai@thyssenkrupp.com](mailto:tkii.chennai@thyssenkrupp.com)

#### **Kolkata**

thyssenkrupp Industries India Pvt. Ltd.  
Ecospace Business Park, Block-3A, 7th Floor  
Rajarhat-Newtown  
Kolkata - 700 160, India  
P: +91 33 6605 5200 / 01  
F: +91 33 6605 5218  
Email: [tkii.kolkata@thyssenkrupp.com](mailto:tkii.kolkata@thyssenkrupp.com)

#### **New Delhi**

407 A, Hemkunt Tower, 98, Nehru Place  
New Delhi - 110 019, India  
P: +91 11 2644 9971 /72 /73  
F: +91 11 26468968  
Email: [tkii.delhi@thyssenkrupp.com](mailto:tkii.delhi@thyssenkrupp.com)

#### **Gujarat**

thyssenkrupp Industries India Pvt. Ltd.  
Keval Corporate Park, Block No. 02  
Third Floor, Opp GEB Substation,  
Channi Road, Channi, Vadodara 391740

Corporate Identity No. : U74999MH1947PTC005508  
E-mail: [contactus.tkii@thyssenkrupp.com](mailto:contactus.tkii@thyssenkrupp.com)  
Internet: [www.thyssenkrupp-industries-india.com](http://www.thyssenkrupp-industries-india.com)

July : 2023

**engineering. tomorrow. together.**