

Manufacturing Business

Quality assured manufacturing to national and international codes



thyssenkrupp



The Strength of Capability, the Power of Experience



We are thyssenkrupp Our Group Mission Statement

We are thyssenkrupp - The Technology & Materials Company.

Competence and diversity, global reach, and tradition form the basis of our worldwide market leadership. We create value for customers, employees and shareholders.

We Meet the Challenges of Tomorrow with our Customers.

We are customer-focused. We develop innovative products and services that create sustainable infrastructures and promote efficient use of resources.

We Hold Ourselves to the Highest Standards.

We engage as entrepreneurs, with confidence, a passion to perform, and courage, aiming to be best in class. This is based on the dedication and performance of every team member. Employee development is especially important. Employee health and workplace safety have top priority.

We Share Common Values.

We serve the interests of the Group. Our interactions are based on transparency and mutual respect. Integrity, credibility, reliability and consistency define everything we do. Compliance is a must. We are a responsible corporate citizen.

Manufacturing Vision.

Be the most safe, efficient, sustainable, flexible & innovative operations with happy workforce working in increasing smart workplace to meet customer requirements.



thyssenkrupp Industries India Pvt. Ltd.

A history of excellence



Pimpri Works (Journey of 76 years)



Hyderabad Works (Foundation Year - 1988)

Established in 1957, thyssenkrupp Industries India Pvt. Ltd. is a part of the Industrial Solutions Business Area of thyssenkrupp AG, Germany.

Today, thyssenkrupp is one of the world's largest industrial conglomerate with three main lines of business activity: Steel, Capital Goods and Services, in all of which it occupies leadership positions.

The group is internationally acknowledged for excellence, borne out of intensive

research, careful market analysis and close collaboration with customers. thyssenkrupp actively pursues a strategy of globalization.

Over the last six decades, tkil has grown to become one of the most trusted names in the fields of Sugar Plant & Machinery, Open Cast Mining & Bulk Material Handling Systems, Cement Plant & Machinery and Steam & Power Generation Plants.

Today, leveraging strong foundations and access to cutting edge world class technology, tkil's plant making capabilities are helping industries become competitive the world over, tkil's strategic vision, as a leading contractor executing turnkey projects, is derived from its core strengths of integrated engineering expertise and automation in manufacturing at its Pimpri (Pune) and Hyderabad Works, backed by an excellent team of project executives.

The company firmly believes in delivering total customer satisfaction that spans everything from concept to commissioning to after sales service.

tkil's celebrated project management capabilities are a result of its long tradition of anticipating and fulfilling specific customer requirements. Highly qualified teams of engineers and technicians, supported by a robust and ultra-modern IT infrastructure, ensures quality standards

that thyssenkrupp is known for worldwide. Its emergence as a true market leader speaks volumes about the world class technology inherent in the company's products. The company's nationwide network of branch offices, coupled with the support of thyssenkrupp's global establishments, enable it to meet customer needs on time, every time.

The thyssenkrupp promise of excellence Driven by the belief that employees are the most vital asset for growth and progress; 8various measures and activities in place for the welfare of employees.

Testimony to the cordial relationship between the company and its employees is the fact that there never has been any worker strike or agitation in the more than 60 years since inception.

Continuous effort to improve the effectiveness of our Quality, Safety, Health and Environment Management Systems.

Our workplaces are set up to ensure occupational health and safety of our employees.

Full compliance with all applicable legal, regulatory and other statutory requirements.

Pimpri Works Relentless striving to minimize the adverse impact of manufacturing activities on environment.

World Class Manufacturing Setup

Pimpri Plant



Hyderabad Plant



Pimpri Workshop



Hyderabad Workshop

	Pimpri Manufacturing	Hyderabad Manufacturing
Infrastructure	<ul style="list-style-type: none"> Total Area: 75,000 m² Area Under Crane: 30,000 m² Lifting Capacity: 160 ton (with 2 Cranes) 	<ul style="list-style-type: none"> Total Area: 1,59,000 m² Area Under Crane: 26,000 m² Lifting Capacity: 80 ton
Forming	<ul style="list-style-type: none"> Cold rolling / Bending plate thickness: - 110 mm 	<ul style="list-style-type: none"> Cold rolling / Bending plate thickness: - 85 mm
Cutting	<ul style="list-style-type: none"> Cutting capacity: plate thickness - 300 mm 	<ul style="list-style-type: none"> Cutting capacity: plate thickness - 150 mm
Machining	<ul style="list-style-type: none"> Turning capacity: \varnothing 2,000 mm x 8,000 mm length and weight 32 Ton Horizontal boring spindle: \varnothing 200 mm Maximum VTL Capacity: \varnothing 10,800 mm x 3,200 mm height 	<ul style="list-style-type: none"> Turning capacity: \varnothing 1,400 mm x 4,000 mm length and weight 7.5 Ton Horizontal boring spindle: \varnothing 160 mm Maximum VTL Capacity: 1,150 mm x 710 mm height
Codes & Standards	<ul style="list-style-type: none"> ASME-U S PP R stamps IBR accreditation ISO 14001:2015 ISO 45001:2018 ISO 9001:2015 	<ul style="list-style-type: none"> ASME-S stamp IBR accreditation ISO 14001:2015 ISO 45001:2018 ISO 9001:2015
Critical Metallurgy	<ul style="list-style-type: none"> SA 516GR70/60, SA210 GRA1, SS-304,309,409M Duplex SS-1.4462, Low alloy steels-SA302 GRB SA335 P22, SA213 T22, SA335 P11, SA213 T11 High strength low alloy steel - Wb36 (15 Ni Cu MoNb5) Hardox-400, 500, MS-IS 2062B 	<ul style="list-style-type: none"> SA 516GR70/60, SA210 GRA1, SS-304,309,409M Duplex SS-1.4462, Low alloy steels-SA302 GRB SA335 P22, SA213 T22, SA335 P11, SA213 T11 High strength low alloy steel - Wb36 (15 Ni Cu MoNb5) Hardox-400, 500, MS-IS 2062B
NDT Facility	<ul style="list-style-type: none"> UT, RT, MPT, PAUT, TOFD, Pneumatic Test, Hydrostatic Test 	<ul style="list-style-type: none"> UT, RT, MPT, PAUT, Pneumatic Test, Hydrostatic Test
Semi - Automatic Idler Manufacturing Facility	<ul style="list-style-type: none"> Not Applicable 	<ul style="list-style-type: none"> \varnothing 76 mm to 200 mm, Length 265 mm to 2200 mm
Pulley Fabrication	<ul style="list-style-type: none"> Up to \varnothing 5000 mm 	<ul style="list-style-type: none"> Up to \varnothing 1400 mm
Panel welding Setup	<ul style="list-style-type: none"> Not Applicable 	<ul style="list-style-type: none"> \varnothing 20 to 80 mm

We are committed to

thyssenkrupp is an ISO 9001-2015, ISO 14001-2015 & ISO 45001-2018 certified Company. We have implemented-Integrated Management Systems at all plants as well as O&M and Construction sites.

At thyssenkrupp, we are committed for continual improvement in Quality, Occupational Safety, Health & Environment. IMS Policy is enunciated by Top Management & lays emphasis on Quality, Occupational Safety, Health & Environment through structured approach & well defined organization.

We have qualified & experienced Quality and OSHE professionals. Corporate IMS systems & operating procedures has been established for implementing the requisites at all stages of Design, Fabrication, Construction, Erection, Commissioning & Maintenance.



We are committed to follow all legal compliances. Zero Injury is our goal. By providing Roof Top Solar system, Rain Water Harvesting system, Bio Gas project we show our commitment towards sustainable growth.

thyssenkrupp Compliance Commitment

The Executive Board of thyssenkrupp AG has issued a clear Compliance Commitment *:

With its more than 200-year history as an internationally operating group of companies, thyssenkrupp takes on social responsibility. Our sustainable economic success is based on innovative strength, technological expertise, quality and customer focus. Our responsible conduct is defined by the strict adherence to all applicable rules and laws. Compliance is therefore given the highest priority.

With our Compliance program, thyssenkrupp has undertaken extensive measures to ensure compliance with anti-corruption, antitrust, anti-money laundering, data protection, export control and sanctions legislation and our internal Group Regulations based on these laws. **Violations are not tolerated (zero tolerance).**

To us, Compliance is a question of mindset: values such as reliability, honesty, credibility and integrity permeate our corporate DNA. We would rather purposely forgo a business opportunity or fail to reach our internal goals than act against the law.

The active participation of every executive and employee in implementing thyssenkrupp's Compliance Program in their respective area of responsibility is essential in further strengthening the trust of customers, suppliers, shareholders, and society in thyssenkrupp.

Miguel López
Chairman of the Board (CEO)

Oliver Burkhard
Member of the Board and Labor Director

Dr. Klaus Keysberg
Member of the Board and Chief Financial Officer (CFO)

* This new version was resolved by the Executive Board of thyssenkrupp AG on 11 July 2023

CERTIFICATE

The Certification Body
of
Quality Circle Forum of India
Certifies that

**THYSSENKRUPP INDUSTRIES
INDIA PVT LTD
PIMPRI**

*has successfully implemented
FIVE-S Workplace Management System in their units
An audit was performed and it was found that
all the requirements are fulfilled in,*

Level - 1 Initiator

This certificate is valid until 31st December 2026

*subject to the continued satisfactory implementation of
workplace management system for sustenance and
improvements with a check by Surveillance audit.*

Date : 14.12.2023
Code : 5S1223-0188

D.K. Srivastava
Executive Director

Global Standards: Accreditations & Certifications - Management System



Global Standards: Accreditations & Certifications - Products



tkil is an ISO 9001:2015 company with product certifications from ASME ("U", "S" & "PP" stamp Certificate of Authorization). tkil is also certified for ISO 14001:2015 Environmental Management System and ISO 45001:2018 Occupational Health and Safety Management System.

Manufacturing Process Flow



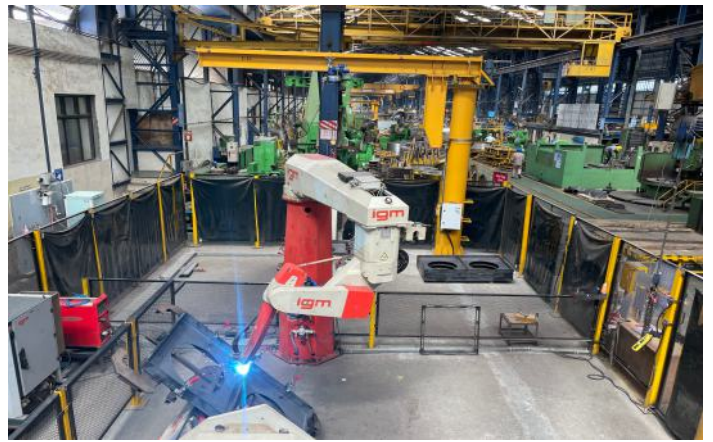
Yard – Efficient Storage



High Tech Cutting Technology



Plate Bending Machine



Welding Work – Using Robot



Sub Structure on Russian CNC VTL



Critical Machining



Assembly Work



Blasting & Painting Work

Manufacturing: Shop Glimpse



Preparatory Shop



Heavy Fabrication Shop – Pimpri Works



Machine Shop



Heavy Fabrication Shop – Hyderabad Works



Assembly Shop

Manufacturing Facilities & Capability



Bucket Wheel Body on Skoda



Mill Shell Machining on Lathe



Polycom Roller Shaft Under Machining



Centrifugal Basket Machining on VTL



Slew Platform Machining on Skoda



Pinion Machining on Hobbing Machine

We have two manufacturing units in the industrially developed areas of "Pimpri-Pune" and "Hyderabad".

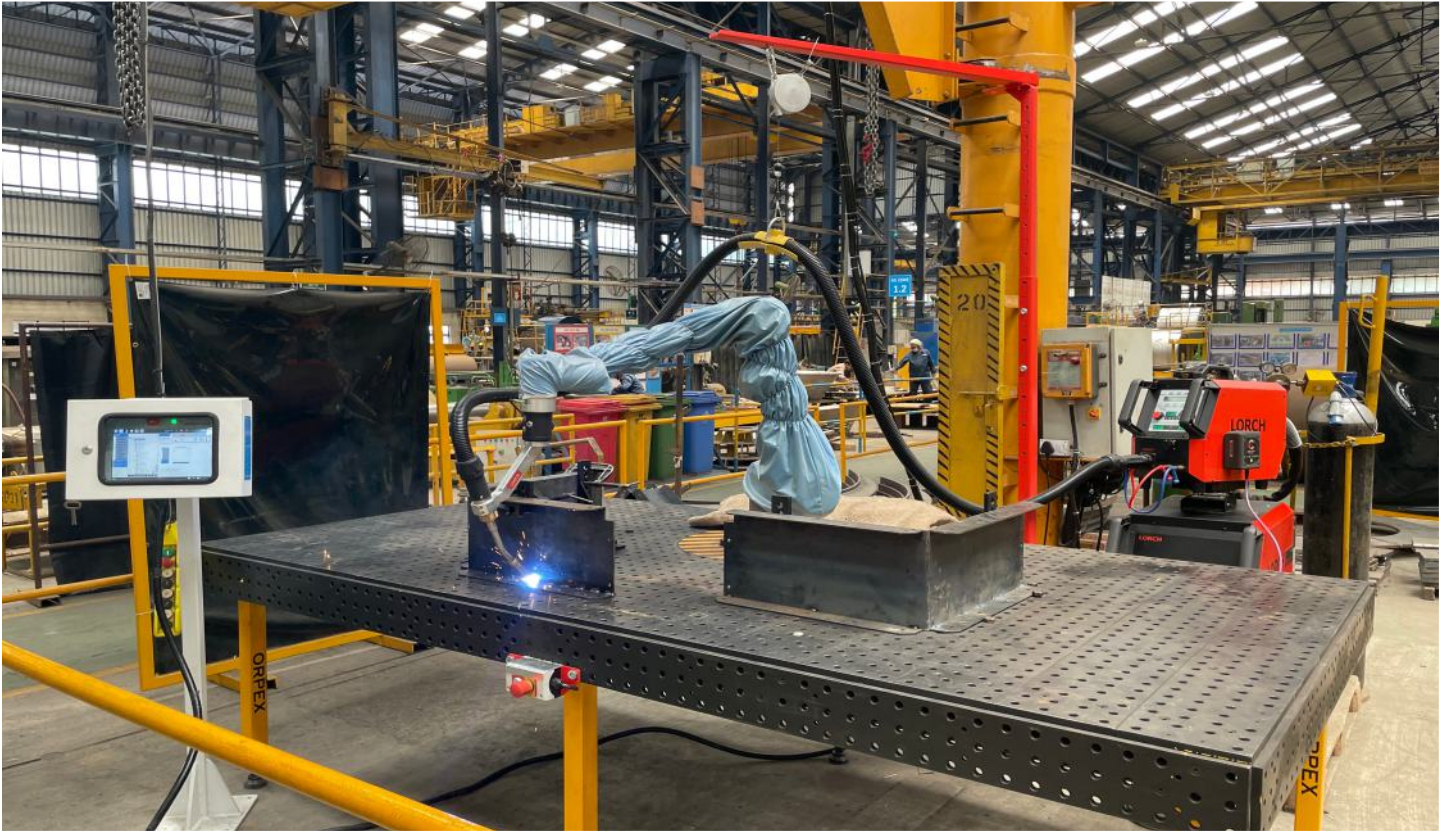
These units have state of the art fabrication and machining facilities with modern CNC and heavy duty horizontal boring, VTL and Lathe machines, aided by testing equipment's of international standards.

Quality assurance starts with planning and designing of the products and ends only with the trouble-free plant performance in the hands of satisfied customers. Each department adheres to prefixed quality standards resulting in flawless performance. Our measures have earned us the, ISO 9001-2015, ISO 14001-2015 & ISO

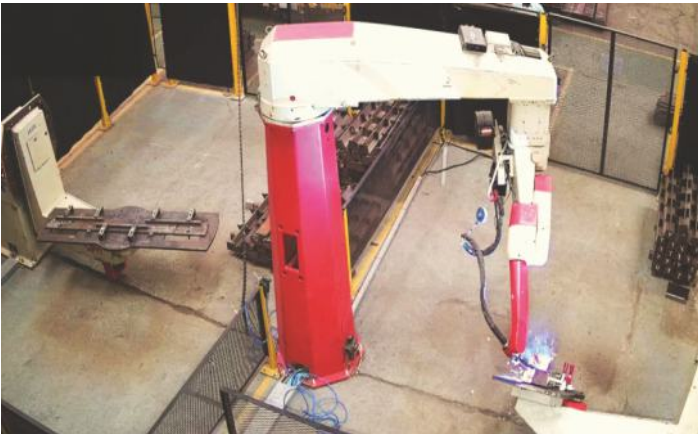
45001-2018, we are certified by ASME with U, S, PP & R stamps for manufacturing of Pressure vessels and Power Boilers, along with Indian Boiler Regulation Certification. With these high quality standards, its obvious that we have the finest level of workmanship in manufacturing of customized equipment's. Full-fledged in-

house manufacturing facilities enable the company to ensure strict compliance to project requirement and effective control quality and workmanship, while ensuring timely deliveries.

Manufacturing Facilities & Capability



COBOT (Power Source – Lorch)



Robotic Welding (Power Source – Fronius)



Tube Fining Machine (Beijing Ron-en Machinery & Integration Co.)



CNC Hard Facing Machine

We believe in optimum utilization of our resources. We believe in work-force which is our greatest resource. We regularly arrange knowledge sharing programs and keep ourselves updated with the latest technology. This skilled workforce is in close interaction with in-house Design and Engineering throughout the manufacturing cycle which ensures flawless results and on time delivery.

Manufacturing Facilities & Capability



Twin Wagon Tippler Assembly



Boiler Drum Under Manufacturing



Steam Transformer Under Manufacturing



End Shield Toothed Ring Machining on Plano Miller



PH Boiler Coil Module Under Fabrication

Cement Plant Equipment Manufactured



Polycom Baseframe



Polycom Roller Shaft Assembly



Apron Feeder



Polytrack Cooler



Separator Rotor



Discharge Diaphragm For Cement Mill



Gravel Grate Valve



Mill Tyre Under Machining in Russian VTL



Kiln Shell



Roller Station Bearing Assembly



Support Roller



Thrust Roller Assembly

Kiln section

- CNC tum mill centre
- Kiln
- Kiln inlet
- Kiln outlet
- Tyre fixing
- Girth gear fixing
- Roller station baseframes
- Roller station bearings
- Support roller assembly
- Thruster baseframe
- Hydraulic thruster
- Pinion shaft assembly
- Drive bearing assembly

Grinding section

- Ball mill
- Diaphragms
- Side shoe bearings
- Polycom base frame
- Pressure block
- Upper frames
- Material feeding unit
- Pinion shaft assembly
- Drive bearing assembly
- Polycom roll assembly

Cooler section

- Grate cooler mechanical
- Grate cooler hydraulic
- Polytrack cooler
- Clinker crusher
- Roll crusher

Mining & Bulk Material Handling Equipment Manufactured



DHB - Crusher Assembly



Twin Wagon Tippler Assembly



Plough Feeder Assembly



Ring Granulator



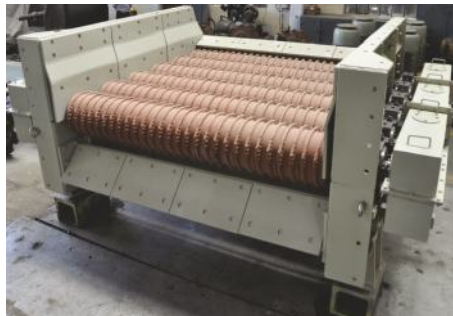
Equalizer Beam



Travel Gear - Proof Assembly



Stacker Reclaimer - Sub Structure



Wobbler Feeder



Vibrating Greazy Feeder



Mill Shell



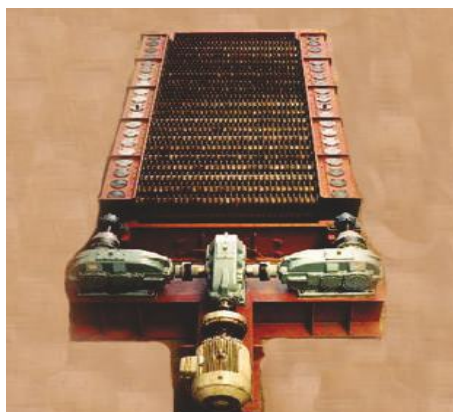
Bucket Wheel Body



Travel Gear Bogie Assembly

Material Handling Equipment

- Stacker & Reclaimer
- Wagon Tippler
- Side Arm Charger
- Crusher House Equipments
- Shiftable Conveyors
- Ship Loaders
- Paddle Feeders
- Spreaders



Screen

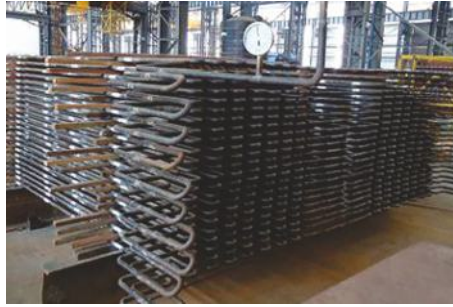


Wagon Tippler

Boiler & Power Plant Equipment Manufactured



Boiler Drum



Economiser Coils



Air Box



Headers



Boiler Panels



Common Steam Distribution Header



Evaporator Module



Waste Heat Recovery Boiler with Bend Tubes



Waste Heat Recovery Boiler Header Frame



Boiler Drums Under Manufacturing

Sugar Mill & Centrifugal Equipment Manufactured



Mill Assembly with Toothed Roller
Pressure Feeder



Shredder Assembly



Travelling Grate



Falling Film Evaporators



Rotary Screen



Common Steam Distribution Header

Milling Plants

- Two roller mill with under feed roller
- Three roller mill with under feed roller
- Toothed roller pressure feeder (TRPF)
- Grooved roller pressure feeder (GRPF) with one under feed roller
- Rotary screen
- Fiberizer-swing type
- Shredder

Boiling House Equipment

- Juice heater
- Steam saving devices
- Falling film evaporator
- Roberts evaporator/ rising film type
- Vacuum pans - continuous type
- Vacuum pans batch type
- Crystallisers (air cooled/Water Cooled / Vertical)

Boilers

- Biomass fired boiler
- Multi-fuel fired cogeneration boilers

Centrifugals

- Batch type centrifugal machines
-KB 1000/1250/1500/ 1750/2250
- Continuous centrifugal machines
-KC 1100k/1350/1500 T/N/M



Centrifugal Machine Shop

thyssenkrupp Industries India Pvt. Ltd.

Pune

Pimpri, Pune - 411 018, Maharashtra, India
P: +91 20 2742 5461-64
F: +91 20 2742 5350
Email: contactus.tkii@thyssenkrupp.com

Hyderabad

Survey Nos: 212-215, IDA, Phase - II,
Cherlapally, Hyderabad - 500 051. Telangana,
India
P: +91 40 2726 3647 / 3540 / 2762 / 3015
F: +91 40 2726 3162
Email: tkii.hyderabad@thyssenkrupp.com

Registered Office

Mumbai

154 C, Mittal Tower, 15th Floor,
210, Nariman Point
Mumbai - 400 021, India
P: +91 22 2202 0064 / 6837
F: +91 22 2204 4025
Email: tkii.mumbai@thyssenkrupp.com

Branches

Chennai

Temple Tower, 5th Floor, Nandanam
672, Anna Salai, Chennai - 600 035, India
P: +91 44 2431 4235 / 2433 9482
F: +91 44 2434 8198
Email: tkii.chennai@thyssenkrupp.com

Kolkata

Eco-Space, Premises No. 701, Block-A
7th Floor, New Town, Rajarhat,
Kolkata - 700 156. India
P: +91 33 6605 5200 / 01
F: +91 33 6605 5218
Email: tkii.kolkata@thyssenkrupp.com

New Delhi

407 A, Hemkunt Tower, 98, Nehru Place
New Delhi - 110 019, India
P: +91 11 2644 9971 /72 /73
F: +91 11 26468968
Email: tkii.delhi@thyssenkrupp.com

Vadodara

Keval Corporate Park,
Block No. 02, Third Floor, Opp GEB Substation, Channi Road,
Channi, Vadodara - 391740, India

Corporate Identity No. : U74999MH1947PTC005508

E-mail: contactus.tkii@thyssenkrupp.com

Internet: www.thyssenkrupp-industries-india.com

engineering. tomorrow. together.